

The Eaton Micro Data Center

Single Enclosure Integrated Solution for IT Equipment



EATON

Powering Business Worldwide

Eaton's Micro Data Center provides an easy-to-configure solution for IT equipment storage in 'Edge-of-Cloud' applications.



Monitoring

- Rack-mountable, 1U space
- Set UPS, air conditioning and environmental sensing
- On-line LCD display
- Remote monitoring



Sensors & Accessories

- Temperature, humidity, smoke, flooding, magnetic door sensors
- Rear fluorescent lighting



UPS

- Eaton 9PX on-line UPS
- 3kVA and 6kVA output
- 2RMU and 3RMU
- Other models available upon request



Front



Rear

Enclosure

- 42U x 600mm x 1200mm
- Fully enclosed design, dust and noise reduction
- Load Rating: 1500kg



Cooling Unit

- Rack-mount, 5RMU
- DC inverter compressor
- Non-stop cooling operation
- R410A environmentally friendly refrigerant



Power Distribution Module

- Rack-mount, occupies 3U space
- Integrated input and output power distribution and lightning protection modules



PDU

- Eaton G3 Series Managed PDU
- 20 x C13, 4 x C19 standard outlets
- Other models available upon request

Save time. Save money. Reduce risk.

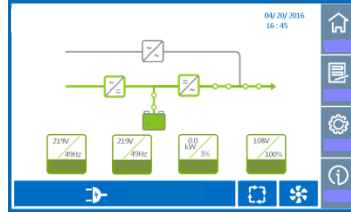
As more companies shift IT resources to on-site Edge-Computing, IT managers are in need of low-cost micro-data centers which can be stored in both office environments and indoor manufacturing sites with fully-contained environmental solutions. Eaton's Micro Data Center ships fully configured with Eaton's industry-leading power systems, a standard rack and cooling unit, and integrated monitoring system, saving installation time, minimizing Total Cost of Ownership (TCO) and maximizing network reliability.

Save time.

Easy to configure racks can be tailored to meet your needs. Components are stocked in-region to ensure fast shipment and easy start-up.



Configure-to-order
Quickly customize the UPS & PDU to your application needs.



Easy Start-up
On-site set-up of power system, cooling and environmental sensors



Remote Access Monitoring
Access power and monitoring information. Alarm settings can send by text and email.

Save money.

Fully integrated solutions save money on hardware costs in addition to removing the need for in-room cooling and maximizing network up-time.



Lowest Total Cost of Ownership (TCO)
In-rack cooling system eliminates the need for room-level cooling system reducing total infrastructure costs.



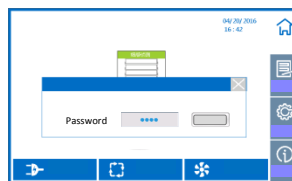
Bundled Solutions
Minimize total system investment through integrated, bundled offering.

Reduce risk.

The Micro Data Center provides enhanced physical security with robust environmental controls.



Environmental Alarms
Protect against fire, dust, smoke, temperature and humidity



Electronic Lock
Only permit authorized users internal access via security code



Welded Steel Frame
Enhanced structural stability with 1500kg load rating

Eaton's Micro Data Center System Specifications

Product Specifications

| Item | Parameter | Specification |
|---------------------------------------|----------------------------|--|
| System Specifications | Dimensions (H x W x D) | 2000mmH (42U) x 600mmW x 1200mmD |
| | # of Enclosures | 1 |
| | PUE (Full Load) | 1.2 (Optimal) |
| | Input Power | AC 230V, 50/60Hz |
| | Max. Power Density | 3.0kW / Enclosure |
| | Recommended IT Load | 3.0kW (Max) |
| | Installation Site | Elevated floor installation / general ground installation |
| UPS Specification | Max. Power Rating | 6kVA (2 x 3kVA UPS) |
| | Max. Equipment Load | 3kVA |
| | Air Conditioning | Powered by dedicated 3kVA UPS |
| | Model | 9PX (3kVA) |
| | Input Voltage Range | 176 – 276V without derating (up to 100-276V with derating) |
| | Input Frequency Range | 40-70Hz, 50/60Hz autoselection |
| | Power Factor | 1.0 |
| Power Distribution System | Installation | Rackmount, 2RMU (each) |
| | Installation Dimensions | Rack mount, 3RMU |
| | Power Distribution | Mains input and UPS output, lightning protection and maintenance bypass |
| Cooling and Airflow Management System | PDU | G3 Series (EMAB22): Managed PDU (0U), C20 Plug, 16A, 20 x C13, 4 x C19 Outlets |
| | Total Cooling Capacity | 3.5kW |
| | A/C Total Air Volume | 580m3/h |
| Monitoring System | A/C Power Supply (Voltage) | 198 to 253 VAC |
| | A/C Installation | Rack-mountable, bottom of the enclosure interior, 5RMU |
| Enclosure Subsystem | Load Rating | 1500kg |
| | Available RMU Space | 29 RMU |
| | Internal Lighting | Standard – rear mounted |
| | Paint Color | Black (RAL9005) |
| | Front Door | Single Glass Door (Standard), Solid steel door (optional) |
| | Rear Door | Double Steel Door (Solid) |
| Monitoring System | Host Monitoring | Rack mount, 1U Height |
| | Monitoring Interface | 7-inch Color Touch Screen |
| | Remote Monitoring | Web Page Integrated Monitoring Software |
| | Content | System Power, Cooling, Smoke, Flooding, Door Status |
| | Sensors | Flooding (1), Temperature and Humidity (1), Smoke (1), Doors (2) |

