

# APC Smart-UPS C™

Efficient, true sine-wave power protection for entry-level servers and network equipment.



Brings the reliability of the world's most popular network and server UPS to entry level applications.

The most affordable true sine-wave UPS's in the Smart-UPS family . Designed for entry level servers, it is compatible with today's active power factor corrected (PFC) power supplies. Included PowerChute Business Edition software is compatible with all major server operating systems and provides UPS management and safe system shutdown.

- **Reliable**
- **Economical**
- **Efficient**
- **Manageable**



Available from:



# APC Smart-UPS C

Application optimized models ideal for entry-level servers, point of sale and other small network devices.

Tower and Rackmount 2U  
1000,1500, 2000 and 3000VA



## Standard features:

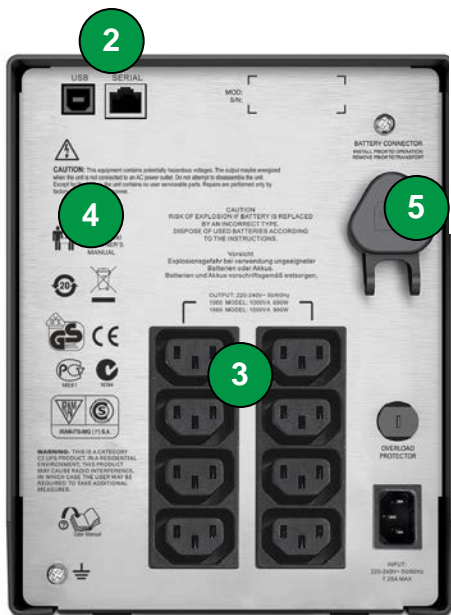
**1 LCD Display**  
Intuitive interface provides comprehensive status information at a glance.

**High Efficiency Green Mode**  
Saves utility costs and reduces heat promoting longer component life.

**Pure Sine-Wave Output**  
Simulates the utility when on battery for optimum device compatibility.

**Network Grade Power Conditioning**  
Automated voltage regulation, noise filtering and surge protection.

**Advanced battery management**  
Temperature compensated charging extends life of internal batteries.



**2 Communication Ports**  
USB and serial ports for UPS management .

**3 Generous number of outlets**  
All receptacles are surge and UPS output protected .

**4 Safety-agency approved**  
Ensures the product has been tested and approved to national standards .

**5 Battery disconnect**  
Convenient way to disconnect battery for transport (tower models).



# APC Smart-UPS C Display

Comprehensive LCD interface for status at a glance.

Interface on all SMC models.



1

## LCD Display Screen

Comprehensive status at a glance

### Status Conditions

- On line
- On battery
- Green mode
- Load graph
- Battery charge graph
- Audible Alarm

### Measures

- Input & Output Voltage
- Load viewable in Watts, VA or %
- Output current and frequency
- Event counter
- Estimated on battery runtime

2

## On Line/On Battery

LED illuminates Green when UPS in on utility power, or will illuminate Orange when providing battery power.

3

## On/Off button

4

## System Fault LED

Illuminates in the event of a system fault and displays error message.

5

## Mute Button

Used to silent the alarms

6

## Display Button

Steps through each measurement screen and provides the ability choose the default view.

## Tower models



Product feature	SMC1000I	SMC1500I
<b>Output</b>		
Power Capacity	600W/1000VA	900W/1500VA
Nominal Output Voltage	230V	
Output Frequency	47-63Hz	
Wave Form Type	Sine wave	
Output Connections	(8) IEC 320 C13	
<b>Input</b>		
Nominal Input Voltage	230V	
Input Voltage Range for main operations (Max adjustable range)	180-287V (170-300V)	
Input Frequency	50/60 Hz +/-3 Hz (auto sensing)	
Input Connection	IEC 320 C14	
<b>Batteries and Runtime</b>		
Battery Type	Maintenance-free sealed lead-acid battery with suspended electrolyte, leak proof	
Typical Backup Time at 1/2 Load (min)	14 min	11 min
Typical Backup Time at full Load (min)	5.Min	4 min
Replacement Battery	APCRBC142	RBC6
<b>Communication and Management</b>		
Interface Ports	USB and Serial (RJ45)	
Control Panel and audible alarms	Etched glass LCD display with LED status indicators; alarm on battery, distinctive low battery alarm	
<b>Surge Protection and Filtering</b>		
Surge Energy Rating	455J	
Filtering	Full time multi-pole noise filtering: 0.3% IEEE surge let-through, zero clamping response time	
<b>Physical</b>		
Maximum Height	215 mm (8.62 in)	215 mm (8.62 in)
Maximum Width	171 mm (6.73 in)	171 mm (6.73 in)
Maximum Depth	439 mm (17.28 in)	439 mm (17.28 in)
Net Weight	17.27 kg (38 lbs)	20.45 kg (45 lbs)
<b>Conformance</b>		
Regulatory	VDE, CE, GOST, C-Tick	
Warranty and Equipment Protection Policy	2 years repair or replace	

## Tower models



Product feature	SMC2000I	SMC3000I
<b>Output</b>		
Power Capacity	1300W/2000VA	2100W/3000VA
Nominal Output Voltage	230V	
Output Frequency	47-63Hz	
Wave Form Type	Sine wave	
Output Connections	(6) IEC 320 C13, (1) C19	(8) IEC 320 C13, (1) C19
<b>Input</b>		
Nominal Input Voltage	230V	
Input Voltage Range for main operations (Max adjustable range)	180-287V (170-300V)	
Input Frequency	50/60 Hz +/-3 Hz (auto sensing)	
Input Connection	IEC 320 C20	
<b>Batteries and Runtime</b>		
Battery Type	Maintenance-free sealed lead-acid battery with suspended electrolyte, leak proof	
Typical Backup Time at 1/2 Load (min)	17 min	11 min
Typical Backup Time at full Load (min)	6.5 Min	3.5 min
Replacement Battery	APCRBC148	APCRBC150
<b>Communication and Management</b>		
Interface Ports	USB and Serial (RJ45)	
Control Panel and audible alarms	Etched glass LCD display with LED status indicators; alarm on battery, distinctive low battery alarm	
<b>Surge Protection and Filtering</b>		
Surge Energy Rating	730 J	724 J
Filtering	Full time multi-pole noise filtering: 0.3% IEEE surge let-through, zero clamping response time, meets UL1449	
<b>Physical</b>		
Maximum Height	216 mm (8.50 in)	435 mm (17.13 in)
Maximum Width	170 mm (6.69 in)	197 mm (7.76 in)
Maximum Depth	440 mm (17.32 in)	544 mm (21.42 in)
Net Weight	27.50 kg (61 lbs)	43.00 kg (95 lbs)
<b>Conformance</b>		
Regulatory	VDE-GS, CE, EAC, C-Tick, IRAM, SABS	
Warranty and Equipment Protection Policy	2 years repair or replace	

## Rackmount models



Product feature	SMC1000I-2U	SMC1500I-2U
<b>Output</b>		
Power Capacity	600W/1000VA	900W/1500VA
Nominal Output Voltage	230V	
Output Frequency	47-63Hz	
Wave Form Type	Sine wave	
Output Connections	(4) IEC 320 C13	
<b>Input</b>		
Nominal Input Voltage	230V	
Input Voltage Range for main operations (Max adjustable range)	180-287V (170-300V)	
Input Frequency	50/60 Hz +/-3 Hz (auto sensing)	
Input Connection	IEC 320 C14	
<b>Batteries and Runtime</b>		
Battery Type	Maintenance-free sealed lead-acid battery with suspended electrolyte, leak proof	
Typical Backup Time at 1/2 Load (min)	14 min	18 min
Typical Backup Time at full Load (min)	5 min	6 min
Replacement Battery	APCRBC124	APCRBC132
<b>Communication and Management</b>		
Interface Ports	USB, Serial (RJ45)	
Control Panel and audible alarms	Etched glass LCD display with LED status indicators; alarm on battery, distinctive low battery alarm	
<b>Surge Protection and Filtering</b>		
Surge Energy Rating	455J	455 J
Filtering	Full time multi-pole noise filtering: 0.3% IEEE surge let-through, zero clamping response time, meets UL1449	
<b>Physical</b>		
Maximum Height (in)	89 mm (3.5 in)	89 mm (3.5 in)
Maximum Width (in)	432 mm (17.0 in)	432 mm (17.0 in)
Maximum Depth (in)	406 mm (16.0 in)	475 mm (18.7 in)
Net Weight	20.52 kg (45.15 lbs)	27.82 kg (61.2 lbs)
<b>Conformance</b>		
Regulatory	VDE, CE, GOST, C-Tick	
Warranty and Equipment Protection Policy	2 years repair or replace	

# Rackmount models



Product feature	SMC2000I-2U	SMC3000RMI2U
<b>Output</b>		
Power Capacity	1300W/2000VA	2100W/3000VA
Nominal Output Voltage	230V	
Output Frequency	47-63Hz	
Wave Form Type	Sine wave	
Output Connections	(6) IEC 320 C13	(8) IEC 320 C13, (1) IEC 320 C19
<b>Input</b>		
Nominal Input Voltage	230V	
Input Voltage Range for main operations (Max adjustable range)	180-287V (170-300V)	
Input Frequency	50/60 Hz +/-3 Hz (auto sensing)	
Input Connection	IEC 320 C20	
<b>Batteries and Runtime</b>		
Battery Type	Maintenance-free sealed lead-acid battery with suspended electrolyte, leak proof	
Typical Backup Time at 1/2 Load (min)	9 min	9 min
Typical Backup Time at full Load (min)	3 min	3 min
Replacement Battery	APCRBC133	APCRBC151
<b>Communication and Management</b>		
Interface Ports	USB, Serial (RJ45)	
Control Panel and audible alarms	Etched glass LCD display with LED status indicators; alarm on battery, distinctive low battery alarm	
<b>Surge Protection and Filtering</b>		
Surge Energy Rating	730 J	724 J
Filtering	Full time multi-pole noise filtering: 0.3% IEEE surge let-through, zero clamping response time, meets UL1449	
<b>Physical</b>		
Maximum Height (in)	89 mm (3.50 in)	89 mm (3.50 in)
Maximum Width (in)	480 mm (18.90 in)	480 mm (18.90 in)
Maximum Depth (in)	470 mm (18.50 in)	670 mm (26.38 in)
Net Weight	26.20 kg (58 lbs)	41.00 kg (90 lbs)
<b>Conformance</b>		
Regulatory	VDE-GS, CE, EAC, C-Tick, IRAM, SABS	
Warranty and Equipment Protection Policy	2 years repair or replace	